

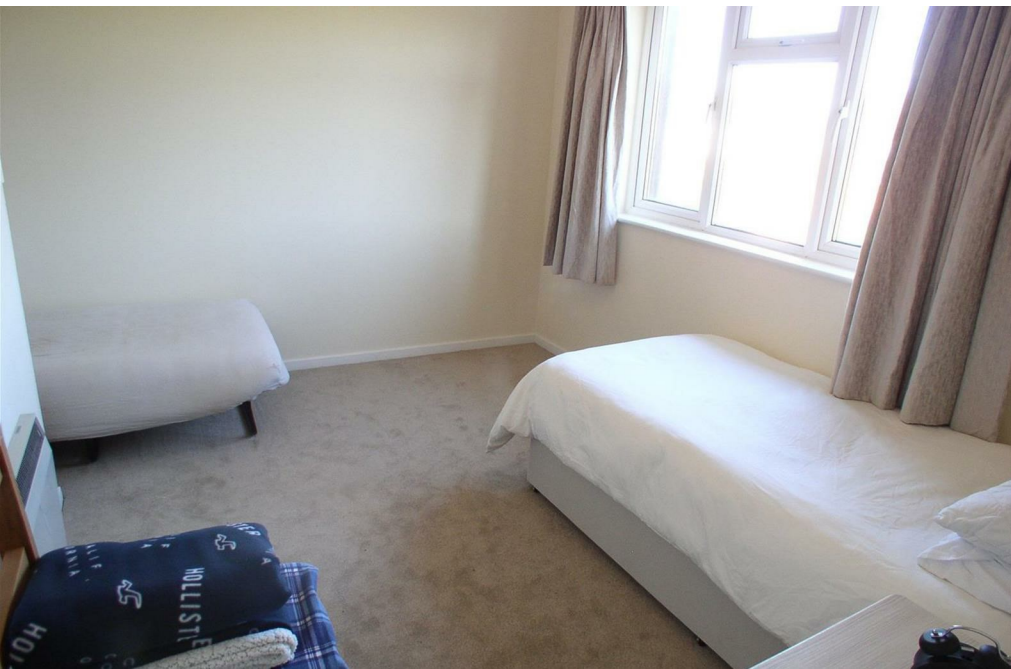


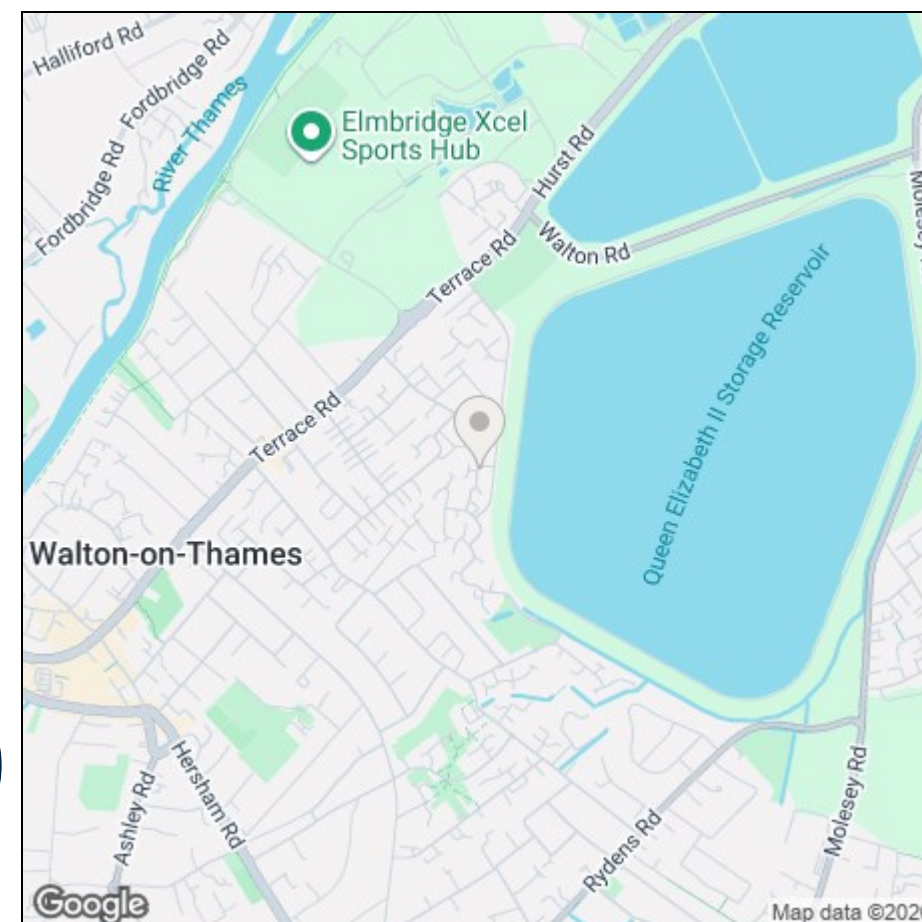
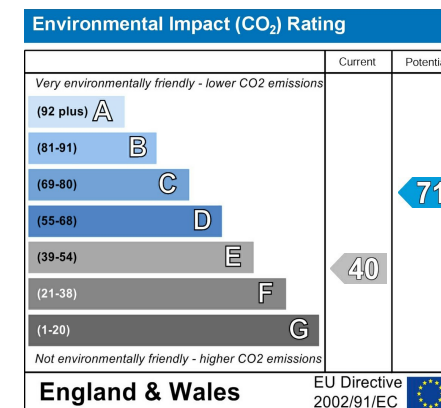
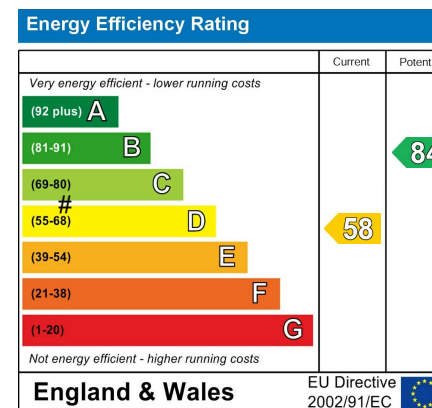
Telford Drive, Walton-On-Thames
£1,250 Per Calendar Month



HTB are delighted to offer this well presented one bedroom house which is traditionally laid out over two floors. Located in a popular, quiet residential cul-de-sac, these homes are rarely available and as such an early viewing is recommended. Accommodation includes entrance lobby, bright and airy living room with archway to the modern fitted kitchen. The open tread stairs lead to the first floor landing giving access to the double bedroom and modern bathroom. Residents parking is available to the front. Call our Walton on Thames office 01932 222266. Available NOW. Council tax band C.







HTB Walton on Thames
01932 222266

45a High Street
Walton on Thames
Surrey
KT12 1DH

